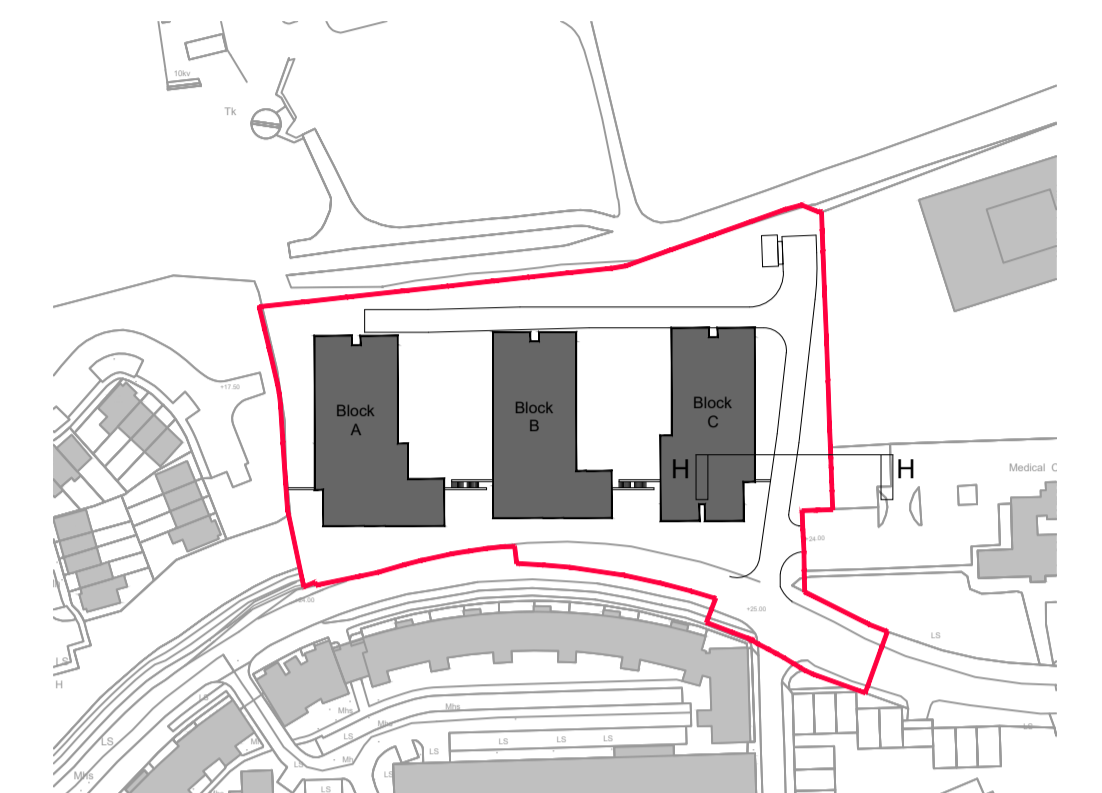




Reservations were voiced on the proximity of Unit C107 to the access road, and it was queried whether it would receive sufficient daylight as its floor level is lower than the road at some points. As the Sections and CGI here demonstrate, the road and footpath are set back 2.0m from the building edge at its narrowest, widening to over 3.5m as it goes down, allowing for a sufficient gap. Results from the Daylight and Sunlight Report by JODA Engineers confirm that this apartment will receive more than the minimum daylight, and will not be compromised by overshadowing.

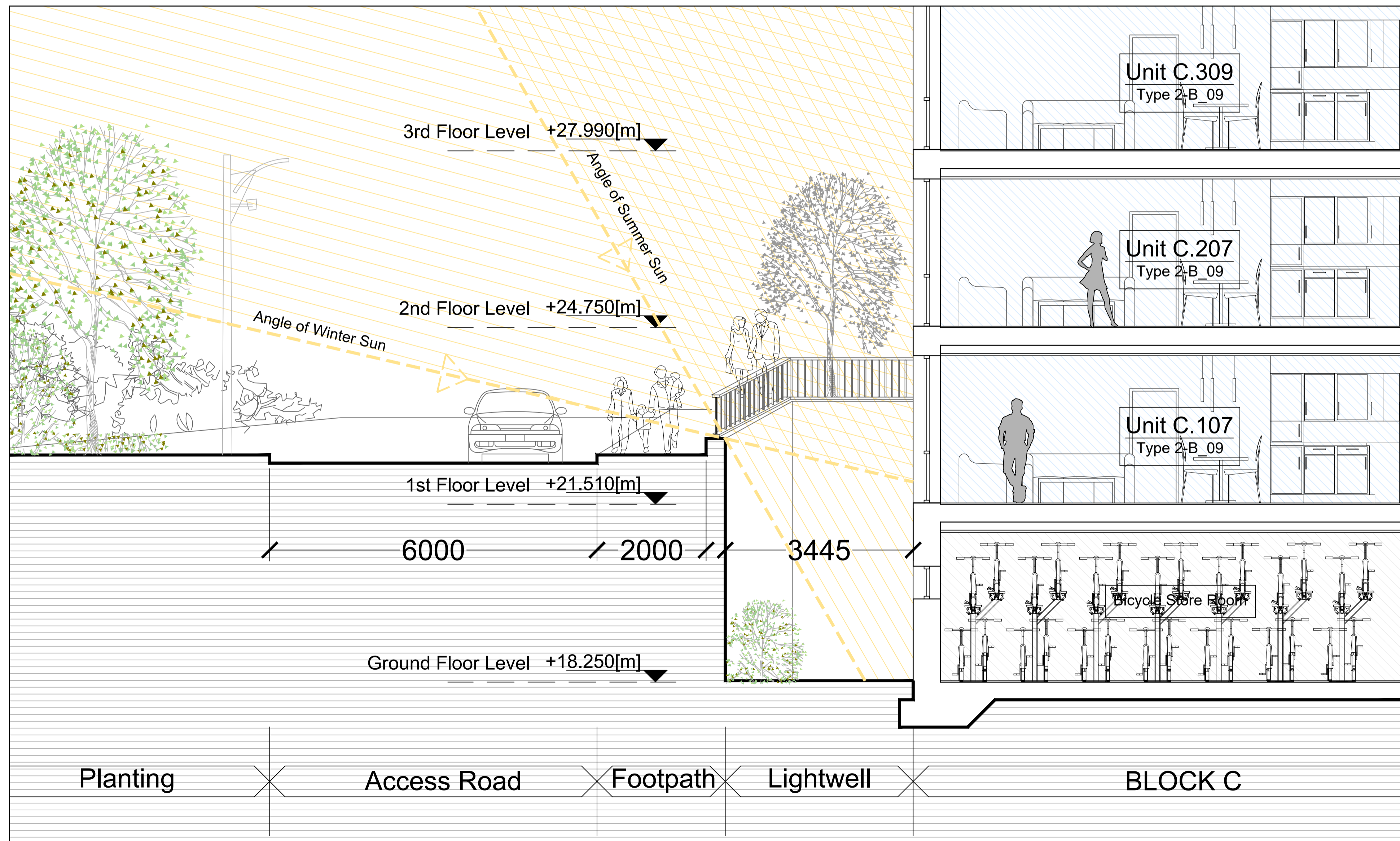
NOTE: - DO NOT SCALE. USE FIGURED DIMENSIONS ONLY.
- THIS DRAWING IS TO BE READ IN CONJUNCTION WITH ALL RELEVANT SPECIFICATIONS AND DRAWINGS.
- ALL DIMENSIONS TO BE CHECKED ON SITE.
- IN THE EVENT OF ANY DISCREPANCIES BETWEEN DRAWINGS THE CONTRACTOR IS TO INFORM THE ARCHITECT IMMEDIATELY.

REV.	DATE	DESCRIPTION	DRWN	CHKD	APPRD.



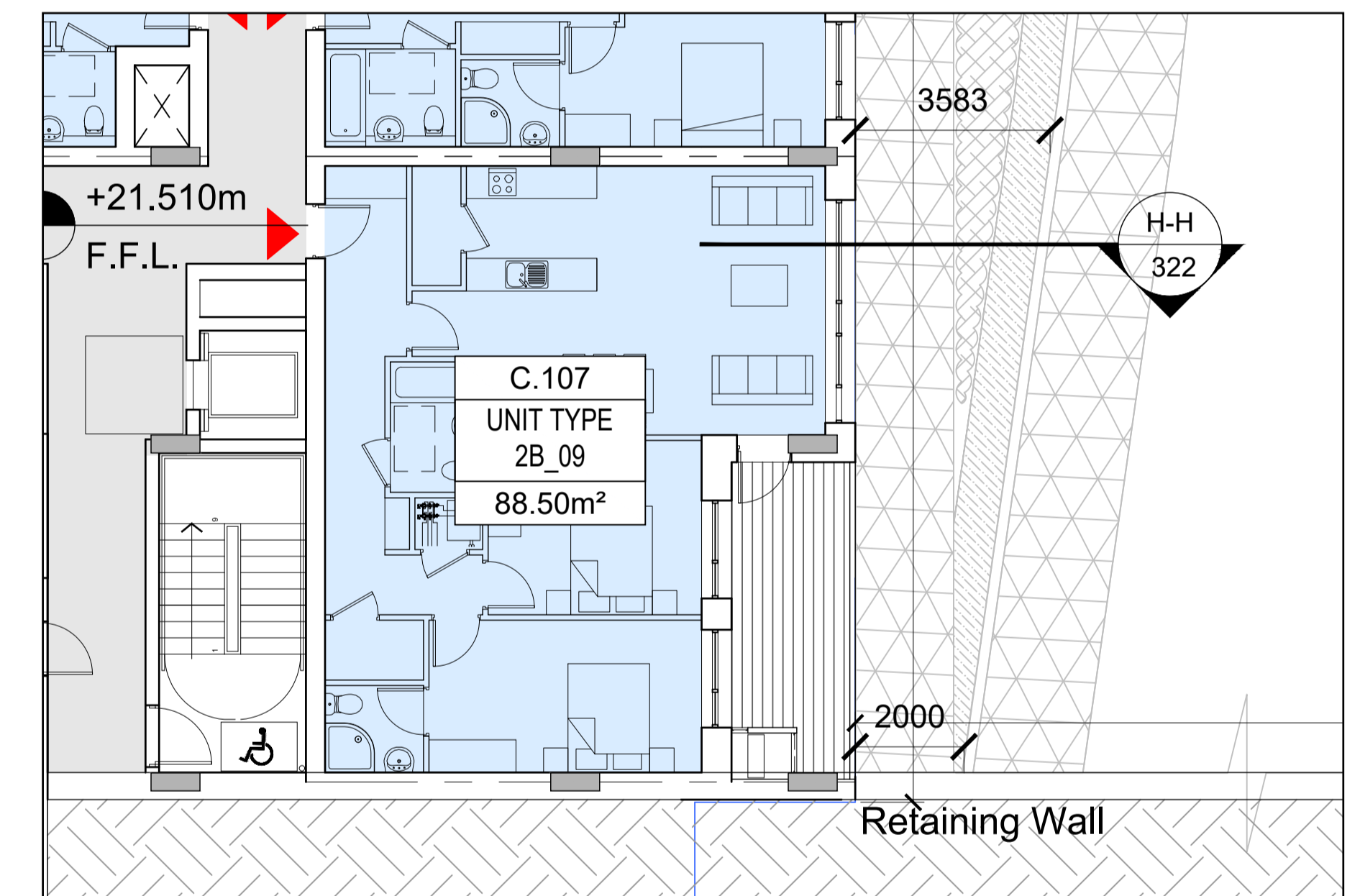
Key Plan
Scale 1:2000

View looking south towards Unit C107



SECTION H-H - Through Unit C107

Scale 1:50 @ A1



1st Floor Plan - Unit C.107

Scale 1:100

WILSON ARCHITECTURE



St Patrick's Place, Wellington Rd., Cork t: 353-21-455255 e: info@wilsonarchitecture.ie
36 Pembroke Rd, Dublin 4 t: 353-1-6601866 w: www.wilsonarchitecture.ie

SCALE	DATE	DRAWN BY	CHECKED BY	REVISION	DRAWING NO.
1:50@A1	May 2020	BOC	PH	-	1921-PL-322

© COPYRIGHT This drawing or design may not be reproduced without permission